


Matching Quick Guide **Forwards**

Starting the Application

Click on the program shortcut (on desktop) 
OR
Start Menu > Programs >
GFI ForexMatch* > GFI ForexMatch*
(*or GFI MarketMatch)

Tip: Tick the “remember my password” setting



ForexMatch

Username:



Password:

Remember my password.

Accessing the Various Features



Tip: Clicking on 'X' minimizes the application window, Double click on the system tray icon to restore application window

Access more menu functions by right-clicking on the icon  in the JTT window or via the system tray GFI icon 

Open GFI ForexMatch – Re-opens the ForexMatch trading screen window

Open Join The Trade – Re-opens the JTT window (as shown above)

Trade Alert – Tick this setting to receive an additional pop-up notification upon a matched trade during a JTT or Matching session

Logout – Selecting this option will log you out of the application but will keep it running in the background

Exit – Exit and closes the application completely. To access GFI ForexMatch, you will need to start the application again via the program shortcut/ folder.

Connectivity Status

The latest install-based version now allows GFI ForexMatch to continue running in the background as a separate application. Simply check on your connection status by looking at the GFI icon colour in the system tray.

Red – Not connected/ logged in
Yellow – Connection In progress
Blue – Connected, Logged in



Matching

GFI operates a dark pool Matching system which allows traders to anonymously contribute and trade at mid-market levels on specific contracts during periodic matching sessions.

Matching sessions will occur at pre specified times during the day and will consist of two phases.

Contribution Phase: The first phase is the Contribution phase and will allow traders to contribute a mid market level on the specific contracts. The trader's contribution is anonymous and known only to the trader, after the session expires the average of all the contributions is taken and used for the second phase.

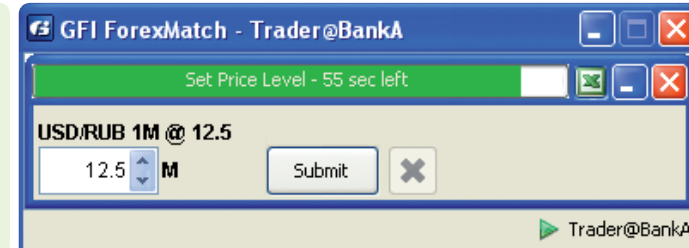
Matching Phase: The second phase is the Matching phase which allows the traders to place orders to BUY or SELL at the level defined in the contribution phase. The Matching phase is also completely anonymous to the market and to the broker. If a trade occurs and two counterparties are matched then the broker is informed and the trade details are passed in the usual way.

The matching application allows trading to take place at a fair mid market level in a completely anonymous fashion and will therefore enhance the ability for trading to take place.

Phase 1 – Submitting Price Levels

- Green timer bar indicate actual time remaining to submit your suggested mid-prices

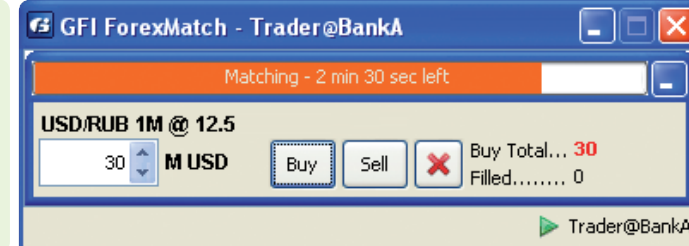
Editable field for entering PRICE level



Phase 2 – Matching Session

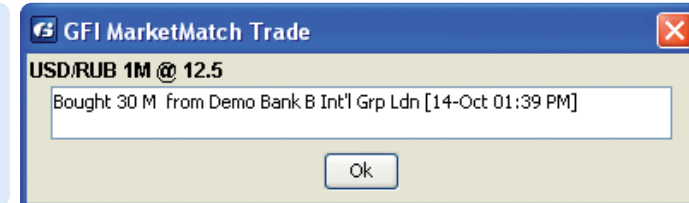
- Orange timer bar indicate actual time remaining before Matching session expires

Editable field for entering order SIZE



Trade Alert

- Matched orders will generate an additional pop-up alert providing details of trade which include - order direction, matched size, counterparty name and timestamp of trade
- Trade details will be processed in the usual manner via GFI's FX Trade Blotter and FX Blotter STP where available.



EUROPE SUPPORT
+44 20 7877 8161
ForexMatch@GFIgroup.com

BLOOMBERG
e-commerce gfi

